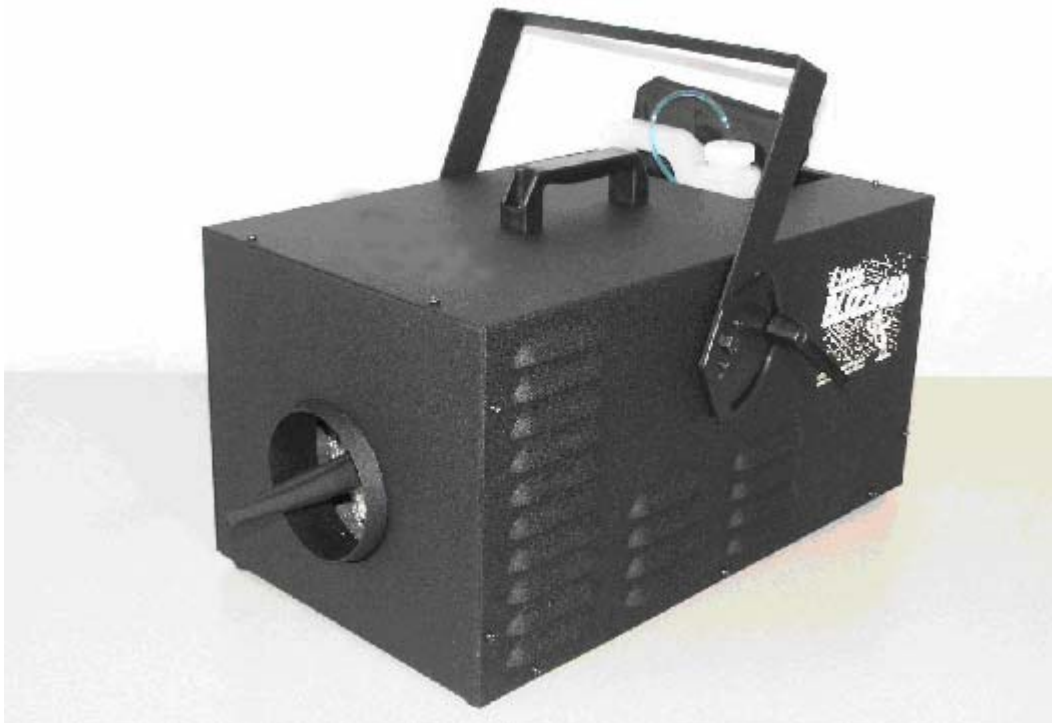

LITTLE BLIZZARD™ BASIC

Operating Instructions



P/N 100233 (110 VAC)

P/N 100232 (230 VAC)

Thank you for purchasing this LITTLE-BLIZZARD™ BASIC

- **As you will notice from the table of contents, the manual for your new product is quite extensive.**
- **To guarantee perfect and successful work with this machine, please take some time to read the manual carefully.**
- **And finally, we believe you will enjoy years of great snow effects if you care for and maintain your LITTLE-BLIZZARD™.**

CITC

2100 196th St. S.W., Ste. 138

Lynnwood, WA 98036

(888) 786-CITC

www.citcfx.com

Contents

1. Set of Equipment Supplied	3
2. Accessories	3
3. Description	4
4. Safety Instructions	4
5. Operating the Little-Blizzard™	5
5.1 Selecting the Location	
5.2 Electrical Power Requirements	
5.3 Hooking things up	
5.4 Selecting the Fluid	
5.5 The Wireless Remote	
5.6 Operating the machine	
5.7 Rest Period & Temperature of Fluid	
5.8 Shut Down	
5.9 Troubleshooting	
6. Service and Maintenance	7
7. Technical Data	8
8. Warranty Conditions	9

1. Set of Equipment Supplied

- Little-Blizzard™ Basic
- Bracket for hanging w/hardware
- Wireless Remote (110VAC only)
(Sender and Transceiver P/N 250010)
- Empty one-gallon bottle
- Instruction booklet and warranty card
- Power Cord
- Extra fuse in fuse box

2. Accessories

- C-Clamp with Safety Cable P/N 250110
- C-clamp w/eyebolt & hanging harness for 5 gal. (56.8 liter) Cubitainer
P/N 250076
- Little Blizzard™ Road Case P/N 250205
- Little Blizzard™ Basic Fluid – Long Lasting P/N 150215
- Little Blizzard Fluid™ Extra Dry (travels up to 50' (15m)) P/N 150160
- Little Blizzard Fluid™ Dry (travels beyond 50' (15m)) P/N 150190
- Little Blizzard Fluid™ Dry 100 (travels beyond 100' (30m)) P/N 150211
- Little Blizzard Fluid™ - Ultraviolet – Light blue P/N 150250
- Little Blizzard Fluid™ - Ultraviolet – Light Pink P/N 150280
- Little Blizzard Fluid™ - Ultraviolet – Bluish White P/N 150220
- Director Fan 110V P/N 100140 (230VAC P/N 100145)
- Hurricane II Fan 110V P/N 100160 (230VAC P/N 100165)
- FX Fan 110V P/N 100141 (230VAC P/N 100142)

Please check whether all the products you ordered are supplied.

3. Description of the Little Blizzard™

The Little Blizzard™ Basic is CITC's most basic evaporating snow effect product. Just hook up a bottle of fluid, turn it on and it makes snow. Flakes fly 15-20 feet.

4. Safety Instructions

WARNING: Read and understand all labels and operating instructions before attempting installation.

- Never open the machine as this could void your warranty!
Risk of electrical shock- This device is supplied with a grounding conductor. To reduce risk of electrical shock, connect only to properly grounded, grounding type receptacles. Never remove the third prong from the plug.
- Depending on type of voltage ordered, this machine requires a 110VAC/20A circuit or a 230VAC/10A circuit for operation. The Little-Blizzard™ draws approximately 10 amps at 110 VAC (5 amps at 230VAC). During Little-Blizzard™ operation this circuit should be dedicated to the Little-Blizzard™. If you have any doubts about the capacity or grounding of your existing circuits, consult a qualified electrician.
- Be sure area around snow machine is dry before applying electrical power.
- Make sure that your unit is pointed in a direction that leaves at least a 10ft (3m) open area out in front. More area is better. Place the front of the machine away from direct contact with electrical instruments and people. Close output is wet.
- Never operate the pump without fluid passing through the tube. This could cause the pump to overheat and damage the piston. Operating the pump without fluid is not covered under warranty.
- Fluid is very slippery when spilled. Care in keeping any drips or spills cleaned up is necessary.
- Do not store Little-Blizzard™ in freezing conditions.

5. Operating the LITTLE-BLIZZARD™

5.1 Selecting the Location

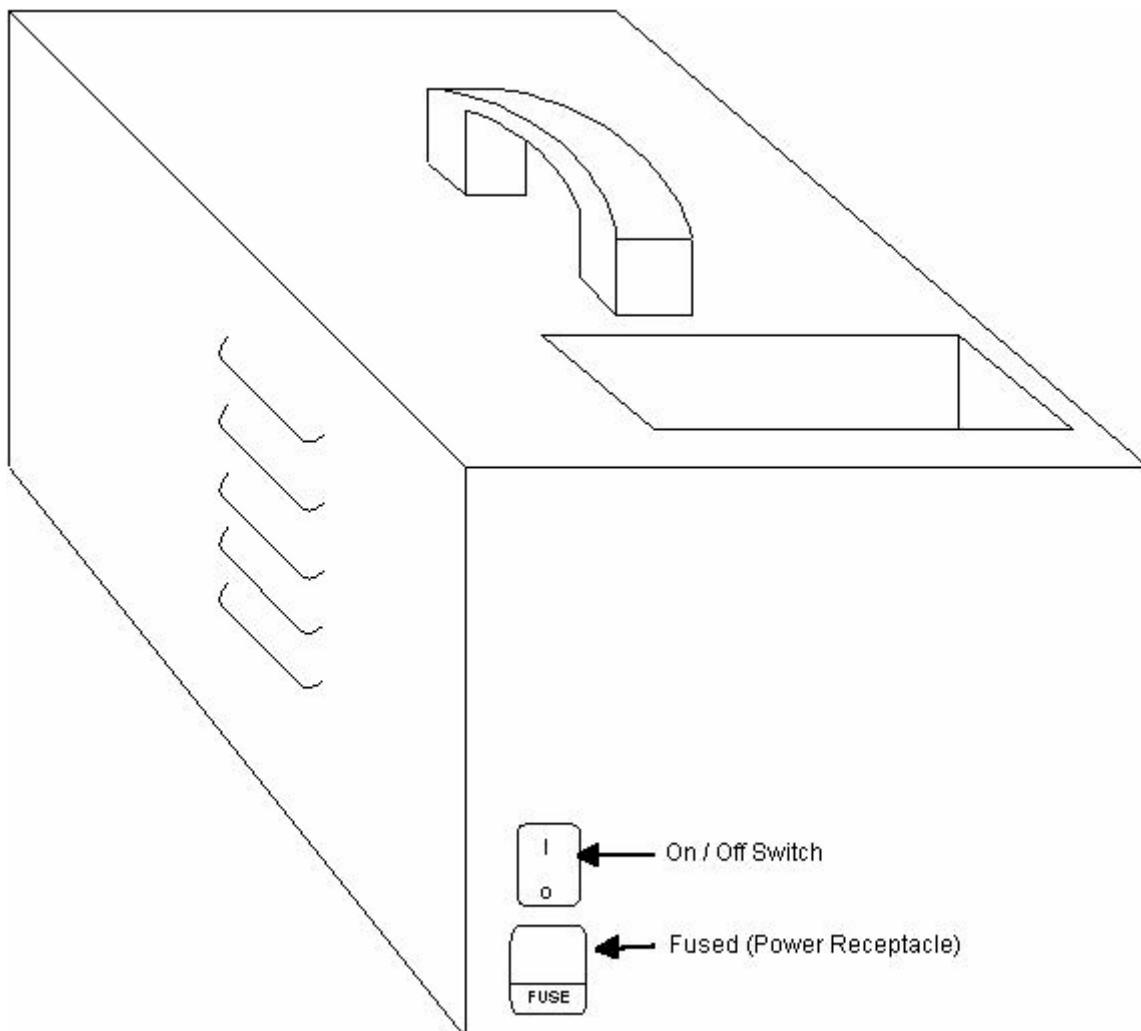
Operate this machine in a level position, being sure the fluid bottle is not going to be above the level of the machine. Un-level positions may cause siphoning or dripping.

5.2 Electrical Power Requirements

Check for proper electrical connection on the rear of the machine. Be sure the circuit can provide 10 amps at 110VAC (or 5 amps for those of you that have purchased a 230VAC machine).

5.3 Hooking things up

Plug in cord to the receptacle on the Wireless Remote Transceiver. Plug the transceiver into a wall outlet or an outlet strip.



5.4 Selecting the fluid

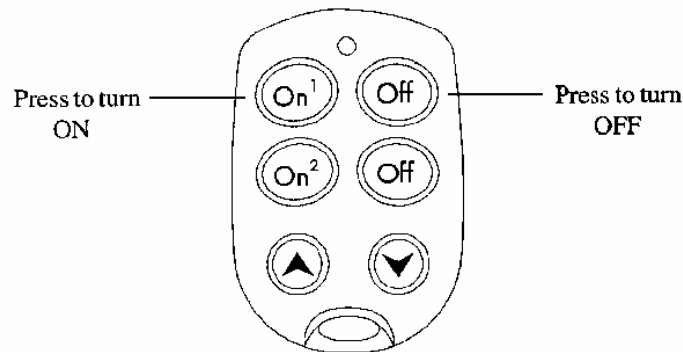
Fill the bottle with CITC's Little Blizzard™ Fluid, placing the tubing with the filter inside and at the bottom of the bottle. Use "Extra Dry" fluid for quickest evaporating snow. For results that cause the snow to evaporate within seconds of touching, use a Hurricane Fan to dry the water from the flakes as they leave the machine. This also causes the snowflakes to stay airborne longer; creating a more realistic falling snow that drifts and floats through the air. Without the use of a fan, the flakes will fall to the floor due to the heaviness of the water content and could remain as a residue for several minutes. Use "Dry fluid" for longer lasting snow when flying over 45 feet or 15m. Use "Dry 100" for falling snow over 100' or 30m.

5.5 The 16-channel Wireless Remote (110VAC only)

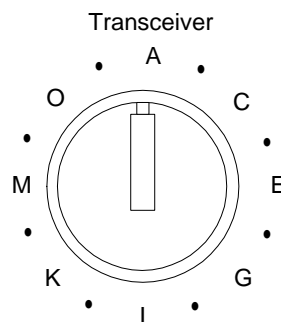
Your wireless remote control system includes a key chain remote and transceiver (15 amps) that lets you turn your Little Blizzard™ on or off by remote control. Using the remote, you can also control a second X10 device (optional) which allows you to control another instrument such as a fan.

WIRELESS REMOTE INSTRUCTIONS:

ON/OFF: The top two on/off buttons on the Key Chain Remote control the RTM75 Transceiver Module, turning the instrument plugged into the Transceiver on or off. Although the Transceiver Module and Key Chain Remote come from the factory set to Code A, if you have a situation where more than one X10 unit is in operation at the same time, you can change the Remote and Transceiver Module combo to operate on any of the 16 Codes (letters A thru P).



CODE: To change the Code on the Transceiver, simply take a flat blade screwdriver and turn the dial on the front of the unit to the desired channel.



Changing the Code on the Key Chain Remote is a bit more complicated.

- 1) Press and hold the first (top) ON button. The red LED blinks once. Three seconds later, the LED blinks the current setting: 1 blink for Code A, 2 blinks for B 16 blinks for P.
- 2) Release the first (top) ON button.
- 3) Press and release the first (top) ON button the appropriate numbers of times for the Code you want to set. Once for A, twice for B, etc. The LED blinks for each press.
IMPORTANT: Hold the button on your last press. Three seconds later, the red LED blinks back the new setting, e.g. 3 blinks for Code C. If you do not follow this programming sequence, the LED will stay on for 1 second and your existing setting will not be changed.

BATTERY: To change the battery in the Key Chain Remote, pry the unit apart and fit a CR2025 Lithium 3V battery. Carefully observe polarity.

5.6 Operating the machine

- o Start the machine by turning on the Wireless Remote Transceiver and the power switch, which is located on the back of the Little Blizzard. This switch will illuminate when power is turned on.
- o Place a long distance fan (Hurricane Fan) under or close to the Little Blizzard™ for blowing the snow in an upward or outward movement. Use of a fan is highly recommended even if a short distance. Fan air and falling snow should meet 20 - 30 inches (50cm – 75cm) in front of the Little Blizzard™. The snow coming from the machine will fall into the draft of the upward air movement and start to fly the direction the fan is pointed. The fan air will also cause the “snowflakes” to dry while it is traveling 30 feet (10m) or more. Never have the fan behind the Little Blizzard™ blowing at it. This will cause a back draft and create the wrong effect.

5.7 Rest Period & Temperature of Fluid

The blower in the machine now can operate up to 15 minutes before needing a 5 to 10 minute cooling down period. Note: Test the air coming from the front of the machine. If after 15 minutes the air is not hot, you may be in a cool environment that is conducive to running the Little Blizzard™ for longer periods. Fluid should be 75°F (26°C)+. Never use cold fluid.

5.8 Shut down

When finished with the machine, clean the tube and pump with water, always leaving water in the tube and pump to prevent oxidation. This will keep the pump piston from becoming stuck and keep the valves operating. Do not run the pump without fluid passing through the tube. This will cause the pump to become hot and could damage pump (not covered by Limited Warranty). Leaving clean water in the pump will help keep out oxidation.

5.8 Troubleshooting

1. If the pump does not draw fluid

If the pump does not draw fluid into the unit, be sure the tubing is in the fluid, not above the fluid. Check electrical power to the machine. Hold up tubing, remove filter and push, blow or use a turkey baster to force the fluid inside the pump. Try again to see if it will pump now. Check to hear any sound coming from the pump side (nearest the top). A slight vibrating sound should be heard if the pump is pumping fluid. A loud knocking sound will be heard if only air is in the line and fluid has not come in yet. Force fluid through the line to get it started. This is called “priming” and the line needs to be full of fluid for the fog mechanism to work. **Note: do not run the pump without fluid passing through the tube for longer than a few seconds at a time while priming the pump. This will cause the pump to become hot and could damage the piston. This is not covered under warranty.**

6. Service and Maintenance

Care of your Little-Blizzard™ will give you years of service. Note: cleaning your unit is going to pay off in constant good performance.

1. Each 50 hours of operation or when finished with the machine, clean the tube and pump with water, always leaving water in the tube and pump to prevent oxidation. This will keep the pump piston from becoming stuck and keep the valves operating. Do not run the pump without fluid passing through the tube. This will cause the pump to become hot and could damage pump (not covered by Limited Warranty). Leaving clean water in the pump will help keep out oxidation.
2. After use, dry all areas on the exterior of the machine with a soft cloth. Remove any Little Blizzard™ Fluid from inside the bottle compartment or outside area.
3. Do not transport or ship with Little Blizzard™ Fluid inside the machine.
4. Do not use or store in freezing conditions.

7. Technical Data

Technical Data Little-Blizzard™ Basic P/N 100233 (230V P/N 100232)	
Dimensions	22" x 10" x 12" (54cm x 25cm x 30cm)
Weight	30 lb (14 kg)
Shipping Weight	35 lb (16 kg)
Shipping Box Size	25" x 15" x 16" (64 cm x 38 cm x 41 cm)
Sound	95 db
Fluid	CITC Little Blizzard™ Fluid available in Long-Lasting, Dry, Extra-Dry, Dry 100 & Ultraviolet
Run Time	15 minutes
Wireless Remote Control	1-channel, on/off with plug-in receiver (110VAC only)
Electrical Supply	110 VAC, 10 A, 60 Hz or 230 VAC, 5 A, 50 Hz
Fuse	10 A – 250 VAC, 20 mm
CE approved	Yes
Limited Warranty	One year

Rev: 9/30/03

8. Limited Warranty Conditions for the LITTLE-BLIZZARD™ BASIC

- 1. Subject to the following conditions we will repair any defect or fault in the unit if it is caused by a proven factory fault and has been advised immediately after appearance and within 30 days of delivery to the end user. Insignificant deviations of the regular product quality does not guarantee replacement rights, nor do faults or defects caused by water, by generally abnormal environment conditions or Force Majeure.**
- 2. Limited Warranty Service will be done in the following way: Faulty parts will be repaired or replaced (our choice) with correct parts. Faulty units have to be shipped to us or sent to us at customer's expense. The RMA# has to come with the faulty unit.**
- 3. The customer loses all rights for limited warranty services, if any repairs or adjustments are done to the units by unauthorized persons and/or if spare parts are used, which are not approved by us. The right of limited warranty service is also lost if a fluid other than CITC Little Blizzard™ Fluid has been used or if units are sent to us with full fluid bottles. Also non-compliance with the instructions in this manual or mistakes by incorrect handling/treating of the machine, any faults and damages caused by undue force will lead to a loss of limited warranty.**
- 4. Freight costs to CITC when under the limited warranty services are the responsibility of the customer. CITC will pay freight upon return.**
- 5. Limited warranty services do not cause an extension of the limited warranty time or the start of a new limited warranty time. The warranty of replaced parts ends with the limited warranty time of the whole unit.**
- 6. If a defect/fault can not be repaired by us in a satisfactory time, we will, within 30 days after sale of the unit, our choice either:**
 - Replace the whole unit for free or**
 - Refund the lesser value or**
 - Take back the whole unit and refund the purchase price, but not more than the usual market price at the time of refund.**
- 7. Further claims, especially for damages, losses etc. outside the unit are excluded.**

If you should send the unit for service, do not forget to remove any liquid from the fluid bottle. Obtain your RMA# by calling CITC. Payment arrangements for repair must be made before receiving RMA # in case unit is not covered under Limited Warranty.

Send unit to:

**CITC
RMA # XXXXXXX
2100 196th Street SW Suite #138
Lynnwood, WA 98036
Tel: (888) 786-CITC or (425) 776-4950
Fax: (425) 776-5129
Website: www.citcfx.com
E-mail: info@citcfx.com**



2100 196th St. SW, #138, Lynnwood, WA 98036-7083
425-776-4950 ✧ FAX: 425-776-5129
www.citcfx.com ✧ info@citcfx.com

September 30, 2003